

SL750

SERIES

74 HP

SKID STEER LOADER



Power, Precision, Performance



SL750 SERIES

CONQUER TOUGH JOBS WITH POWER AND PRECISION

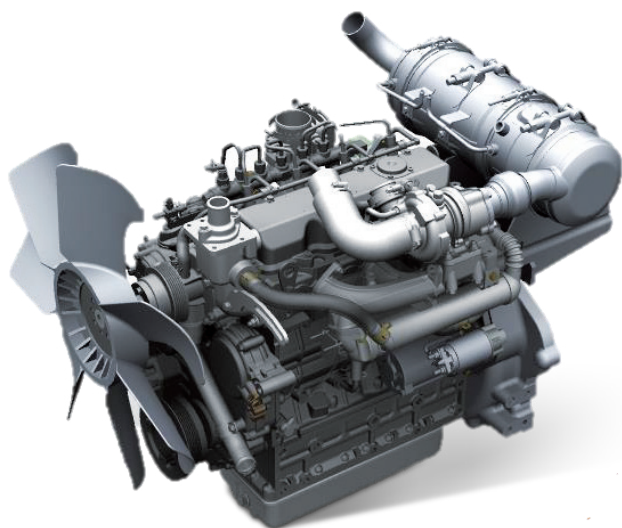
The KIOTI Compact Skid Steer delivers powerful performance and versatility with a 74-horsepower engine, vertical lift path, and robust undercarriage for handling tough tasks. Featuring pilot joystick controls, a spacious cab with excellent visibility, these loaders ensure smooth operation and maximum comfort. With easy service access and efficient design, the SL750 boosts productivity and minimizes downtime, making it the ideal choice for operators seeking reliability and performance on the job site.

**WE DIG
DIRT**

- KIOTI 4-Cylinder In-Line Vertical, Water-Cooled Turbo Diesel Engine
- 74 HP
- Standard 2-Speed
- 14-Pin Auxiliary Hydraulic Electrical Connector
- Excavator Style Overhead Sliding Door
- LED work lights (2 Front/2 Rear)
- 12 x 16.5 12PR Tires
- Standard Rearview Camera
- Spacious Cab w/ High Back Suspension Seat
- Pilot Hydraulic Joystick Controls

SL750 SERIES

PREMIUM PERFORMANCE FEATURES



Fuel Efficient Diesel Engine

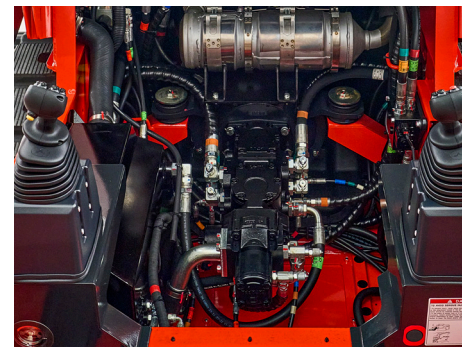
KIOTI 4-Cylinder in-line vertical, water-cooled turbo diesel, CRDI engine improves fuel efficiency while reducing noise levels. Offers the operator a quiet work environment with powerful performance.

Proven Quality and Performance

A powerful 74 horsepower KIOTI engine. Rely on the proven performance of the KIOTI engine to deliver consistent power and reliability, ensuring that you can tackle tough jobs with confidence, knowing that your equipment will deliver optimal performance reliability.

Torque Compensation

Enables the engine to maintain a consistent and stable torque level under all conditions. Delivers unwavering power, built to conquer the sudden loads and increased demands of tough field conditions.



Powerful hydraulics

As operators take on bigger and more ambitious jobs, they expect their equipment to pave the way. The KIOTI TL750 is equipped with powerful hydraulics, ample ROC and excellent traction force.



Flow+ Hydraulics

Boost performance without breaking the budget. Flow+ Auxiliary Hydraulics deliver enhanced power for light to medium-duty tasks, providing an efficient and cost-effective alternative to traditional high-flow systems.



Precision Pilot Joystick

The Hydraulic Pilot Joystick Controls offer intuitive and responsive handling of the machine's functions, enabling the operator to work with precision and finesse, even in tight spaces or during complex tasks.



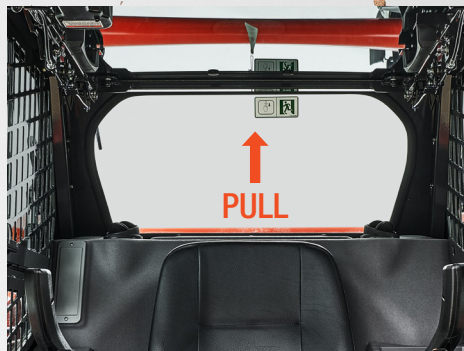
Tilt-up Cabin

Supported by gas springs, the tilt-up cab provides the operator with easy access to service parts underneath, reducing downtime and keeping your equipment in peak condition. Keep operations running smoothly with our user-friendly maintenance design.



Standard Two-Speed Travel

Increased productivity with standard two-speed travel, allowing operators to quickly transition between low-speed precision and power and high-speed transport.



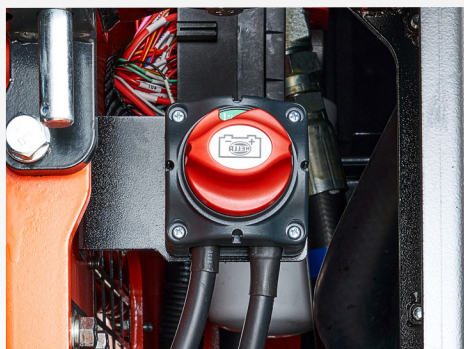
Emergency Escape

The Rear Window doubles as a secondary exit, providing operators with an emergency escape route in the event the front exit is inaccessible.



Escort System

The front and rear working lights remain on for 30 seconds after the engine is shutdown, increasing visibility and safety as the operator exits the cab in low light conditions.



Main Power off Switch

The main disconnect switch helps prevent battery discharge during long-term storage. Once power is disconnected, the switch knob can be removed to further protect against theft and prevent unintended operation.



Control Interlock System

With the Control Interlock System travel and operation are enabled only when all seat bars are securely lowered, helping to minimize the risk of unintended control activation.



Rear View Camera

The seamlessly integrated rearview camera with corresponding cab display offers the operator additional visibility and safety when reversing. The flush mounted camera is strategically placed for added lens protection.

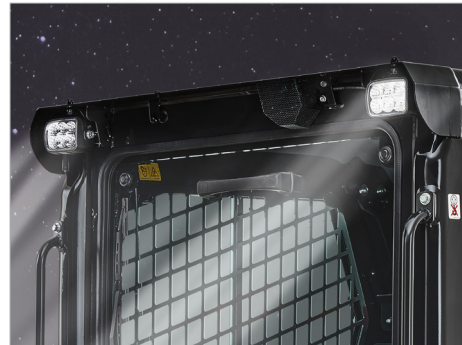


SL750 SERIES BUILT WITH COMFORT IN MIND



Sliding Overhead Door

The convenient Overhead Sliding Door allows for swift entry and exit, enhancing your efficiency. This door can securely lock open, so there's no need for removal, and unlocks smoothly for operators to enjoy the cab's climate control.



Standard LED Work lights

Front and rear work LED lights enhance visibility in low light conditions, keeping you pushing forward when you need to burn the midnight oil.



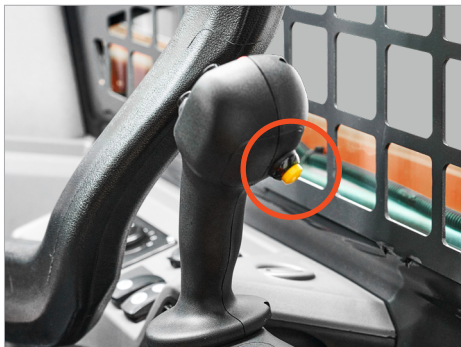
Excellent Visibility

The wide front window gives the operator an excellent view of buckets or attachments. The visibility of window on the roof of the cabin also provides the operator a clear view when raising a load above the cabin.



Outstanding A/C Performance

Optimized airflow through five vents provides outstanding cooling and heating throughout the year. It also prevents fog or frost on the windows in cold weather, so as not to interfere with the work.



Multi Function Joysticks

Multi-function joysticks empower operators to effortlessly control various machine functions with intuitive movements. This not only reduces operator fatigue but also boosts efficiency on the job site, ensuring tasks are completed swiftly and comfortably.



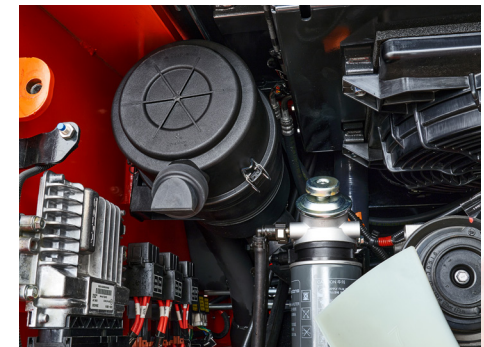
Engine Speed Control

Get the right power for every task. The rotary control ensures a fixed engine speed for consistent workloads, while the foot pedal lets you seamlessly adjust RPM for responsive performance during variable workloads.



Engine Air Intake

Built to withstand harsh conditions, the engine air intake system is designed to protect against dust and debris, ensuring clean airflow to the engine. This helps maintain optimal performance, reduce wear, and extend the life of key engine components.



Dual Air-Cleaner Elements

Designed for tough conditions, the dual air-cleaner elements provide superior filtration, keeping the engine clean and efficient in dusty environments. This system reduces maintenance and extends engine life, ensuring less downtime and more time on the job.





EFFICIENT PERFORMANCE

Efficient performance at low displacement with turbocharger & intercooler



ECO-FRIENDLY

Satisfied with Tier 4 emission warranty



Enhanced Warranty

A standard 3 year, 3,000 hour warranty. Benefit from peace of mind, giving the freedom to work confidently and efficiently knowing that your machine is protected.

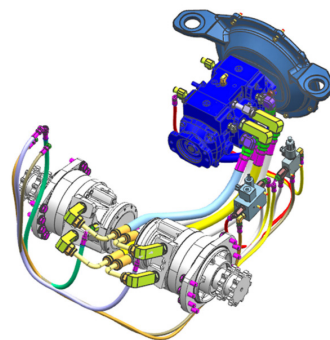


SL750
SERIES



Lift Arm Bypass

The lift arm bypass is conveniently located inside the cab of the machine. Allowing the operator to lower the lift arms manually. This boom down button can be found at the bottom left side of the operator's seat.



Excellent Traction Force

Power through any challenge with the direct drive system. Featuring Bosch Rexroth drive motors and advanced HP management, it optimizes tractive effort and torque for exceptional pushing force in all ground conditions.



Ride Control

Reduce material spillage and increase the "smoothness" of your ride with KIOTI Ride Control. This option delivers lift arm cushioning driving over uneven terrain, offering increased efficiency and comfort.



Self-Leveling System

With a flip of a switch, the self-leveling feature allows you to maintain a horizontal angle while lifting to reduce spillage. No more manual adjustments as you lift, making your lift easier as it makes your operation more efficient.



KIOTI Digital Display

The easy to navigate color display provides diagnostic information such as fault codes and error messages, integrated rearview camera, maintenance hour tracking, and many other features to help the operator monitor the machine from inside the cab.



Easy Chain Case Drain

Simplify maintenance with our easy to access side and bottom chain case drain, designed to minimize downtime, reduce contamination risk, and ensure optimal performance — resulting in less maintenance time, higher productivity, and lower costs.



Lift Arm Protected Hose Routings

Lift Arm Protected Hose Routings ensure that hydraulic lines are protected on the interior side of the lift arms. This innovative design offers superior protection against potential damage from external impacts, while also allowing for easy maintenance access to hydraulic lines.



Vertical Lift Path

The vertical lift path is the load was being lifted vertically. The geometry of the arm allows the boom to raise the bucket straight up to full height. The vertical lift path has better stability, greater lift height, and better operating capacity than the radial lift path.



KIOTI



SPECIFICATIONS

OPERATING SPECIFICATIONS

MODEL		SL750
Operating Weight w/o Operator (Canopy)	lb. (kg)	8,196.7 (3,718.0)
Operating Weight w/o Operator (Cab)	lb. (kg)	8,468.0 (3,841.0)
Optional Counterweights	lb. (kg)	10,061.9 (4,564.0)
35% Tipping Load	lb. (kg)	1,882.8 (854.0)
50% Tipping Load	lb. (kg)	2,689.6 (1,220.0)
Rated Operating Capacity w/ Optional Counterweights	lb. (kg)	2,833.0 (1,285.0)
Tipping Load	lb. (kg)	5,379.3 (2,440.0)
Breakout Force, Tilt (Bucket)	lb. (kg)	5,511.6 (2,500.0)
Breakout Force, Lift	lb. (kg)	5,015.5 (2,275.0)
Traction Force	lbf (kgf)	6,347.1 (2,879.0)
Lift Arm Path		Vertical
Control		ISO Pilot

NOTE: Specifications and design are subject to change without notice.

SPECIFICATIONS

MODEL		SL750 Canopy	SL750 Cab	SL750 Flow+
ENGINE				
Model		KIOTI 4HTI4		
Type		KIOTI 4 Cylinder, In-Line Vertical, Water-Cooled 4-Cycle Turbo Diesel, CRDI		
Engine Gross	HP (kW)	73.6 (54.9)		
Rated Revolution	rpm	2,400		
Peak Torque	lbf-ft (N-m)	202 (274)		
Peak Torque	rpm	1500		
Total Displacement	cu. in. (cc)	148.6 (2,435.0)		
FLUID CAPACITIES				
Fuel Tank	gal. (ℓ)	26.4 (100.0)		
Engine Oil (Filter included)	gal. (ℓ)	2.4 (9.0)		
Engine Coolant (Radiator included)	gal. (ℓ)	2.7 (10.4)		
Hydraulic Tank	gal. (ℓ)	10.0 (37.9)		
HYDRAULIC SYSTEM				
Hydraulic Flow		Standard		
Loader Hydraulic Pressure	psi (bar)	3,335.9 (230.0)		2,900.1 (200.0)
Loader Hydraulic Flow	gpm (lpm)	21.9 (82.9)		34.0 (128.7)
UNDERCARRIAGE				
Tire Size		12 x 16.5 12PR Tires		
TRAVEL SPEED				
Low	mph (km/h)	7.2 (11.5)		
High	mph (km/h)	12.1 (19.4)		
DIMENSIONS				
Length w/o Bucket	in. (mm)	116.1 (2,950.0)		
Length w/Bucket on Ground	in. (mm)	144.7 (3,675.0)		
Height to Top of Cab (w/o Beacon)	in. (mm)	81.2 (2,063.0)		
Max Overall Height	in. (mm)	160.2 (4,068.0)		
Hinge Pin Height at Max Lift	in. (mm)	126.6 (3,215.0)		
Reach at Max Lift and Dump	in. (mm)	37.4 (949.0)		
Clearance at Max Lift and Dump	in. (mm)	97.4 (2,473.0)		
Ground Clearance	in. (mm)	7.7 (195.0)		
Departure Angle	deg.	25		
Maximum Dump Angle	deg.	42		
Wheelbase	in. (mm)	47.2 (1,200.0)		
Turning Radius from Center — Machine Rear	in. (mm)	70.4 (1,788.0)		
Turning Radius from Center — Coupler	in. (mm)	60.9 (1,548.0)		
Rack Back Angle at Maximum Height	deg.	88		
Bucket Pin Reach at Maximum Lift	in. (mm)	16.3 (414.0)		
Width with Bucket (Std)	in. (mm)	74.4 (1,890.0)		
Rack Back Angle on Ground	deg.	29		

NOTE: Specifications and design are subject to change without notice.

STANDARD EQUIPMENT

- 74 HP Kioti 2.4L Diesel Engine
- 14-Pin Auxilliary Hydraulic Electrical Connector
- 12 x 16.5 12PR Tires Skid Tires
- 2" Retractable Seatbelt
- 12V Electric Outlet
- Auxilliary Hydraulics
- Backup Alarm
- Battery Disconnect Switch
- Digital Display
- Engine Speed Dial and Pedal
- Excavator Style Overhead Sliding Door
- Horn
- Keyed Engine Start
- LED work lights (2 Front/2 Rear)
- Mechanical Quick Attach
- Open Canopy
- Operator Presence Control
- Pilot Hydraulic Joystick Controls
- Rear View Camera
- Self Leveling
- Suspension Seat
- Two-Speed Travel
- Wet Disc Parking Brake

OPTIONAL EQUIPMENT

- 3" Retractable Seatbelt
- Add-on Counterweights
- Beacon Light
- Bluetooth Radio
- Engine Block Heater
- HVAC
- Polycarbonate Door
- Power Quick Attach
- Flow+ Auxiliary Hydraulics
- Ride Control



Daedong - USA, Inc.
KIOTI Tractor Division
 6300 KIOTI Drive, Wendell, NC 27591 USA
Toll free 877-GO-KIOTI Fax 919-374-5001
Web www.KIOTI.com

Dealer Imprint Area

LIT-SL750-01